



## THE ORDER OF CONFUSION

Water in my eyes  
I splash my heart  
On the thirsty canvas  
Trusting in my blindness  
And the universe alike  
Where colours clash  
Beyond my control  
In a miraculous way  
There's order  
To confusion

50cm x 50cm x 3cm



### **SHAPE OF BLUE**

Seeing you in the dark  
Sinking with such light  
Drawn to your glow  
I tried to catch you  
With such luck

Exploring infinite space  
To only depths where  
Blue defies logic  
And we are diamonds  
Into the abyss with grace

**50cm x 50cm x 3cm**



### **DUSTING IN LIGHT**

Traveling at light speed  
Towards you with no heed  
And thus collide we did  
Not batting an eyelid  
Stars dusting in our path  
Illuminates the aftermath  
It would seem bizarre  
What shambles we are

**50cm x 50cm x 3cm**

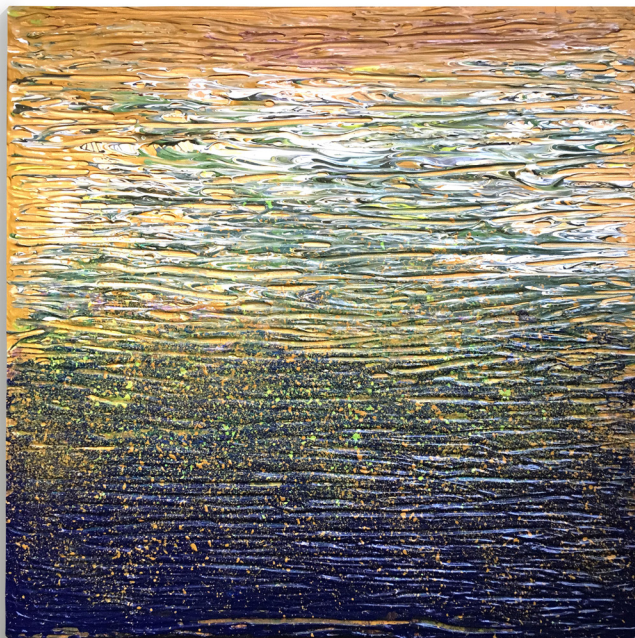


### **MY WEeping PEACOCK**

Shimmering withered feathers  
Shrinking violet glory  
Tearing broken gems  
Anchored to my hippie heart

I'll keep you safe  
My weeping peacock

**50cm x 50cm x 3cm**



## **THE SIREN WHO WALKS**

The wails of the vixen  
Lures the siren of deep  
A touch she yearns

From the dark to glisten  
Sun rays that weep  
A path that burns

**50cm x 50cm x 3cm**



**CASCADE No.3**

Bleeding through scars  
Refuted by vicars  
I didn't cascade  
As per our parade  
Regardless of burden  
Aren't we golden

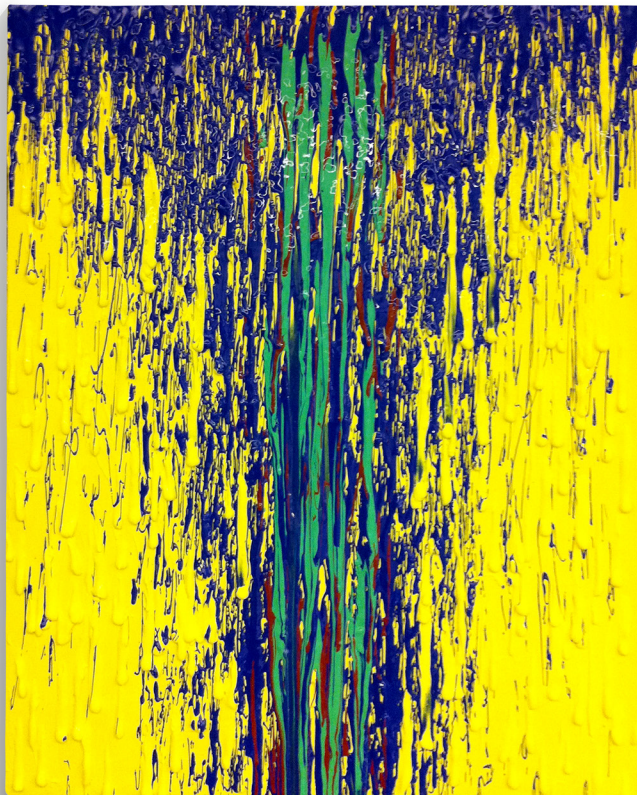
**59.5cm x 84cm x 2 cm**



**CASCADE No.4**

Energy Vampire  
A Moth to my Fire

59.5cm x 84cm x 2 cm

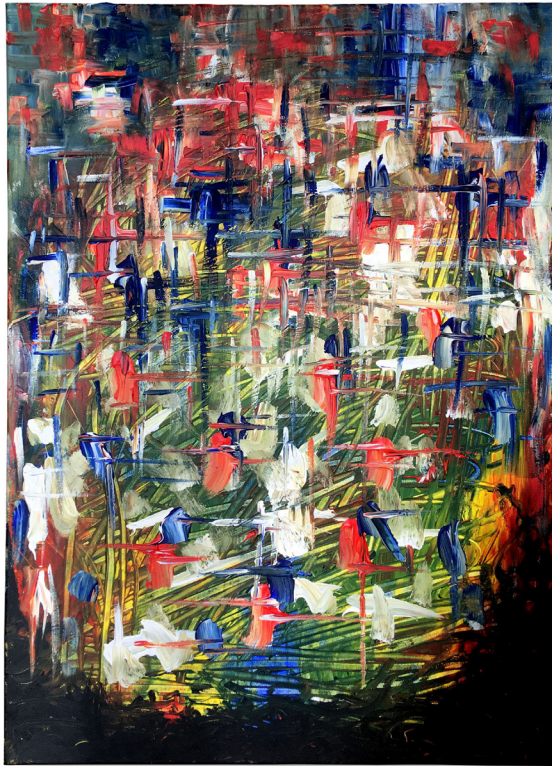


60cm x 80cm x 3cm





60cm x 80cm x 3cm



## **MIRAGE**

A dialogue  
Of strokes and smears  
Of drips and splashes  
Our monologues  
Crosshatching  
Looping through  
Empty streets  
In the dead of night  
Till we see each other  
In this mirage  
Of flickering lights  
Our conversation  
Immortalized

**59.5cm x 84cm x 2 cm**



## **PORCELAIN**

I am all born of porcelain  
Canvas so pure and pristine  
Fragile as I am translucent  
Romantic I am in lucent  
Histories weigh till who may touch  
A million pieces until such  
Melting into resurrection  
Shining through imperfection

**59.5cm x 84cm x 2 cm**



## **TARMAC**

I open my eyes leaving the dark  
An arduous journey I'd embark  
Fighting demons disguised as friends  
The limits of my mind it bends  
The sun illuminates my path  
Waters glistening above wrath  
A flight I'll take alone, it's fine  
For tomorrow I'll wine and dine

**60cm x 80cm x 3cm**



## **ARMOUR**

Blind is my heart  
How do I start  
With scars so thick  
A soul so sick  
Thus I'd conceal  
Not to reveal  
Gilding copper  
For my armour  
So to transcend  
Truths I will bend

**50cm x 50cm x 3cm**