

# New Zealand Studies

THE STOUT RESEARCH CENTRE

## Volume 9 Number 1

FOR THE STUDY OF NEW ZEALAND

## March 1999

HISTORY, SOCIETY & CULTURE

NEW ZEALAND STUDIES

*formerly the Stout Centre Review*

ISSN 1173-6348

*Editor* John Mansfield Thomson

*Editorial Assistant* Lisa Larkindale

*Design & production* Roger Joyce

*Stout Research Centre Director* Vincent O'Sullivan

*Stout Research Centre Administrator* Sarah Upton

NEW ZEALAND STUDIES is a multi-disciplinary journal reflecting the research interests of the Stout Research Centre, Victoria University of Wellington.

Membership of the Stout Research Centre is \$40.

This supports the work of the Centre, entitles participation in seminars and other activities and includes subscription to *New Zealand Studies*.

Single copies cost \$10, from the Stout Centre.

ADDRESS ALL ENQUIRIES TO:

*The Administrator*

*Stout Research Centre*

*Victoria University of Wellington*

*PO Box 600, Wellington, New Zealand.*

*Tel +64-4-471 5305*

*Fax +64-4-496 5439*

*E-mail Stout-Centre@vuw.ac.nz*

## Contents =

Page 3

ALISTAIR TE ARIKI CAMPBELL

THE CHALLENGE OF THE DRUMS

*Graduation Address*

FROM ISLAND TO ISLAND

*Extracts from an unpublished autobiography*

Page 15

PAUL MORRIS

FRAGMENTS OF FAITH

*Religion in contemporary New Zealand*

Page 22

CHARTING WELFARE HISTORY

*Three major new works*

DAVID THOMSON

MARGARET MCCLURE

BRONWYN DALLEY

Page 30

BOOK REVIEWS

*Ross Somerville reviews*

The Oxford Companion to

New Zealand Literature

*edited by Roger Robinson and Nelson Wattie*

*Roger Wilson reviews*

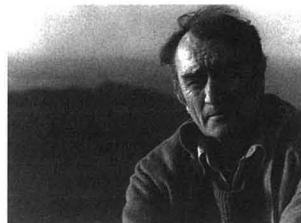
Alex Lindsay: The man and his orchestra

*by Adrienne Simpson and Geoffrey Newson*

*Cover and right:  
Alistair Campbell  
with Kapiti Island  
in the  
background.*

*Photo:*

*Robert Cross*



## Victoria's centennial celebrations

THE STOUT RESEARCH CENTRE'S contribution to the celebrations surrounding the 100th anniversary of Victoria University has been the initiation of a series of lectures in the Council Chamber entitled *Eminent Victorians*, ranging through the arts and sciences and designed for a non-specialist audience. These have been extremely successful and it is hoped to publish them in due course.

This issue of *New Zealand Studies* also reflects the centenary. The conferment of the degree of Doctor of Literature (*honoris causa*) on the distinguished writer Alistair Te Ariki Campbell suggested we might focus on his formative years as a student at Victoria in the late 1940s through extracts from his unpublished autobiography 'From Island to Island'.

He has at the same time given us the privilege of being the first to publish his latest poem 'Words and Roses', which he read at the conclusion of his acceptance speech. This poem is the last in a sequence of ten, entitled 'Cages for the Wind'. His speech, reproduced in full in this issue, serves as a fitting prelude to the autobiographical material – the same theme, same time and place, captured in a different

light, and we see new characters move to the foreground. It should be mentioned that preceding the graduation ceremony, a group of Pacific drummers electrified the audience and prompted the reference to the challenge of the drums in Alistair Campbell's address in reply.

Rachel Barrowman, who has been writing the centennial history of the University while based at the Stout Centre, will be interviewed by William Renwick in the September issue. This will also contain a discussion with Don Akenson, whose earlier book on the Irish in New Zealand earned high praise. He is continuing his long-standing research interest in the Irish, especially their response to the concept of 'Empire'.

The second annual Stout Centre lecture was given this year on 24 May by Alan Ward, Emeritus Professor at Newcastle University in Australia, and a notable writer on New Zealand race relationships. His subject was 'An Unsettled History: Treaty claims in New Zealand today'. This address will be published in the September issue of the journal. ✍ JMT



### *Celebrating the* 1940 CENTENNIAL A call for papers

In November 1999 the Stout Research Centre is holding a two-day seminar on the national celebrations marking New Zealand's first 100 years, including the 1939-40 Wellington Exhibition.

Abstracts of 30-minute papers are invited. Please contact:

J.M. Thomson, Stout Research Centre,  
Victoria University of Wellington, PO Box 600, Wellington